

# BETON POMPASI - MİXER YEDEK PARÇALARI

## SPARE PARTS FOR CONCRETE PUMP & MIXER



# SEÇKİN

# DÖKÜM

[www.seckindokum.com](http://www.seckindokum.com)

Seçkin Döküm yeni yapılanma oluşumu ile beton sektöründe faaliyet göstermektedir. Beton sektöründe yılların vermiş olduğu birikim ve kapasitesimiz sayesinde sektörün tercih edilen lider firmalarının arasında yerini almıştır. Uzman kadrosu ile hizmet kalitesini arttırarak büyümeyi sürdürmektedir

**Kalite Politikamız;**

Sürekli gelişen teknolojiyi takip ederek; Gerekli yatırımları zamanında gerçekleştirip gelişmelere ayak uyduran firmamız, müşteri gereksinimlerini yerine getirerek beton pompası ve beton mikseri yedek parça sektöründe almış olduğu siparişleri zamanında teslim eden bir firma olarak; piyasadaki saygın yerini korumayı kendisine hedef seçmiştir.

Müşteri gereksinimlerini zamanında ve eksiksiz yerine getirmek ve sürekli iyileştirme ile sektörde lider olmak temel politikamızdır.

**Vizyonumuz**

Büyüme ve gelişmeyi sürekli kılmak, sektörde markalaşma yolunda kalıcı olmak,

**Misyonumuz**

Kaliteden asla ödün vermeyen çağdaş optimum maliyetli çözümlerle ürünler, ürünleri taahhüt edilen zamanda, teknik şartnameye uygun eksiksiz olarak teslim etmek, genç ve dinamik kadrosuyla değişim ve yenilikleri işinin her alanına yansıtmaktır.

Seckin Dokum with the formation of new structures, it operates in the concrete sector. Thanks to our years of experience and capacity in the concrete industry, it has become one of the preferred leading companies in the sector. It continues to grow by increasing service quality with its expert staff

**Our Quality Policy;**

Following continuously developing technology; realizing the necessary investments on time and keeping pace with the developments, our company has chosen to maintain its reputation in the market as a company that fulfills customer requirements and delivers the orders it has received in the concrete pump and concrete mixer spare parts sector on time.

Our main policy is to meet customer requirements on time and complete and to be leader in the sector with continuous improvement.

**Our vision**

Continuous growth and development, to be permanent in the way of branding in the sector,

**Our mission**

With modern optimum cost-effective solutions that never compromise on quality, products, products at the promised time, in accordance with the technical specifications, young and dynamic staff to reflect changes and innovations in every field of their work.





**SD-001** | Elbow 10 Degree 5.5"



**SD-002** | Elbow 15 Degree 5.5"



**SD-003** | Elbow 20 Degree 5.5"



**SD-004** | Elbow 30 Degree 5.5"



**SD-005** | Elbow 45 Degree 5.5"



**SD-006** | Elbow 90 Degree 5.5"



**SD-007** | Elbow 90 Degree Short Type (180)



**SD-008** | Elbow 90 Degree Assisted 5.5"



**SD-009** | Elbow 90 Degree 5.5"



**SD-010** | Foldable Elbow (PM)



**SD-011** | 6" Elbow (PM)



**SD-012** | 1. Outlet Elbow 7" - 6" (Cifa)



**SD-013** | 2. Outlet Elbow 6" (Cifa)



**SD-014** | Tapered Bend DN180/150 90 Degrees (Schwing)



**SD-015** | Elbow 150 Degrees (Schwing)



**SD-016** | 1. Outlet Elbow DN180 (Schwing)



**SD-017** | 2. Outlet Elbow DN180 (Schwing)



**SD-018** | Connection Bend DN180 14 Degree (Schwing)



**SD-019** | Elbow 90 Degree with 10 cm 5.5" (Schwing)



**SD-020** | Elbow 90 Degree with 20 cm 5.5" (Schwing)



**SD-021** | Elbow 90 Degree with 34 cm 5.5" (Schwing)



**SD-022** | Elbow 90 Degree with 43 cm 5.5" (Schwing)



**SD-023** | 2. Outlet Elbow New Type (Sermac)



**SD-024** | 1. Outlet Elbow Olo Type (Sermac)



**SD-025** | S Pipe



**SD-026** | Elbow 5.5" 32.5 Degree (Schwing)



**SD-027** | Elbow 6" 50 Degree (Schwing)



**SD-028** | Reducing Pipe 200 mm (PM)



**SD-029** | Elbow 6" 45 Degree (Schwing)



**SD-030** | Elbow 60 Degree (Cifa)



**SD-031** | Elbow 36 Degree (Cifa)



**SD-032** | DN125 5.5" Ergonic Elbow



**SD-033** | Elbow 90 Degree R240 (Cifa)



**SD-034** | Elbow 4.5" 45 Degree



**SD-035** | Elbow 4.5" 90 Shart R180



**SD-036** | Elbow 30 Degree (Cifa)



**SD-037** | Elbow 35 Degree (Sermac)



**SD-038** | Elbow 9 Degree (Cifa)



**SD-039** | Elbow 6" 32.5 Degree (Schwing)



**SD-040** | Elbow 42 Degree (Cifa)





**SD-041** | Elbow 90 Degree R190



**SD-042** | Elbow 90 Degree Short (Cifa)



**SD-043** | Elbow 5.5" 45 Degree Long (PM)



**SD-044** | Reduction Pipe 1070 mm (Sermac)



**SD-045** | Reduction Pipe 1200 mm (PM)



**SD-046** | Reduction Pipe 1286 mm (Cifa)



**SD-047** | Reduction Pipe 1400 mm (200Line)

DN150-125 1500 mm Reduction Pipe (Schwing)



SD-048

DN150-125 1550 mm Reduction Pipe (Schwing)



SD-049

DN150-125 1570 mm 5.5" - 7" Reduction Pipe (Schwing)



SD-050

DN150-125 1600 mm Reduction Pipe (Schwing)



SD-051

DN150-125 2500 mm Reduction Pipe (Schwing)



SD-052

DN150-125 3000 mm Reduction Pipe (Schwing)



SD-053



**SD-054** | S Valve 2018N Ø80 (PM)



**SD-055** | S Valve 2318N Ø90 (PM)



**SD-056** | Spectacle Wear Plate (PM)



**SD-057** | Complete Upperhousing Ø80 Support Flange (PM)



**SD-058** | Wearing (PM)



**SD-059** | Spectacle Wear Plate (PM)



**SD-060** | Complete Upperhousing Ø90 Support Flange (PM)



**SD-061** | Wearing (PM)



**SD-062** | Wear Sleeve (PM)



**SD-063** | Thrust Ring with Steel (PM)



**SD-064** | Thrust Ring (PM)



**SD-065** | Discharge Support (PM)



**SD-066** | Slide (PM)



**SD-067** | Slewing Lever Ø80 (PM)



**SD-068** | Slewing Lever Ø90 (PM)



**SD-069** | Shaft For S Pipe 2018N Ø80 (PM)



**SD-070** | Shaft For S Pipe 2318N Ø90 (PM)



**SD-071** | Piston Ram DN200 (PM)



**SD-072** | Piston Ram DN230 (PM)



**SD-073** | Delivery Cylinder 230 x 2100 (PM)



**SD-074** | Rock DN210-180 (Schwing)



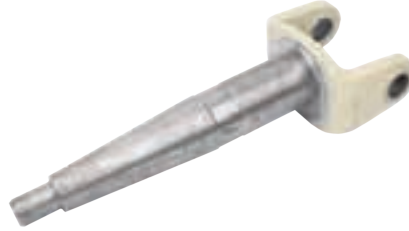
**SD-075** | Rock DN220-180 (Schwing)



**SD-076** | Slewing Cylinder (Schwing)



**SD-077** | Slewing Pivot (Schwing)



**SD-078** | Slewing Pivot (Schwing)



**SD-079** | Slewing Cylinder (Schwing)



**SD-080** | Wearing Insert DN200 (Schwing)



**SD-081** | Wearing Insert DN210 (Schwing)



**SD-082** | Wearing Insert DN230 (Schwing)



**SD-083** | Cutting Ring DN230 (Schwing)



**SD-084** | Wearing Insert DN250 (Schwing)



**SD-085** | Cutting Ring DN220 (Schwing)



**SD-086** | Slewing Shaft (Schwing)



**SD-087** | Slewing Shaft (Schwing)



**SD-088** | Delivery Cylinder 230x2100



**SD-089** | Water Pump Double Breaking LT Type



**SD-090** | Hydraulic Cylinder



**SD-091** | Chut Handle Mechanic



**SD-092** | Pin and Perno Set 130



**SD-093** | Pin and Perno Set 160



**SD-094** | Roller 220x110 Complete



**SD-095** | Roller 280x110 Complete



**SD-096** | Roller 280x160x90 Complete



**SD-097** | Roller 280x160x100 Complete



**SD-098** | Roller 280x160x110 Complete



**SD-099** | Roller 250x160x90 Complete



**SD-100** | Roller 250x160x100 Complete





**SD-101** | Roller 250x160x110 Complete



**SD-102** | Roller 250x130x120 Complete



**SD-103** | Roller 245x130x120 Complete



**SD-104** | Roller 280x160x90 External



**SD-105** | Roller 245x130x120 External



**SD-106** | Double Flange 5.5" 3 mt, 4 mt, 6 mt Hose



**SD-107** | Single Flange 5.5" 3 mt, 4 mt, 6 mt Hose



**SD-108** | Delivery Pipe 3 mt 5.5"



# BETON POMPASI - MİXER YEDEK PARÇALARI

## SPARE PARTS FOR CONCRETE PUMP & MIXER



 **SEÇKİN**  
**DÖKÜM**

 Fevzi Çakmak Mah. Konsan San. Sit. 10726 Sk. No:5/1 Karatay / KONYA / TURKEY

 +90 332 346 32 12

 +90 332 346 32 12

 info@seckindokum.com

 www.seckindokum.com



**UGR**  
REKLAM AJANSI  
0332 351 51 96